



YEŞİLLER

Solution Partner

www.yesillermakina.com



ABOUT US

Yeşiller Machinery is an engineering and manufacturing company that provides design, precision machining, welding and assembly services for aerospace, rail systems, and automotive and energy sectors. Our company, which was founded in 1996, started its manufacturing operation with revolver machines in a workshop with 200 m² area. The company entered the automotive sector by continuing to add new CNC machines to its production infrastructure in line with increasing investments and customer demands. As a result of the developments in the aviation industry, our company started to manufacture detail parts for the aviation industry since 2017. As a result of increasing capacity and market share, our company moved to its new factory that has an area of 3000 m² in 2023.





OUR MISSION

With competitive and sustainable policies, to offer the best quality product to our customers in the shortest time and at an affordable price in a way to create added value. To provide opportunities for our employees in a good environment where skills are developed and participation and teamwork are encouraged. To maintain the honor of being an institution that does not compromise on the principle of "QUALITY IS OUR PRINCIPLE, NOT A GRACE", which is the source of our success in production, for many more years.

OUR VISION

In the light of the philosophy of continuous development, to be a leading organization that is always preferred for our employees, customers and our sector by integrating quality and efficient production understanding with the technology of the time.

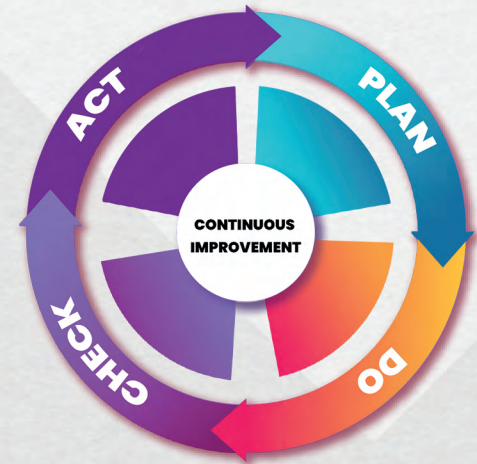
Quality is not a grace, it is our principle.





QUALITY ASSURANCE

- ✓ Quality management system
- ✓ Environmental management system
- ✓ OHS Management System
- ✓ Information Security Management System



SECTORS WE WORK IN

✓ Aviation Industry

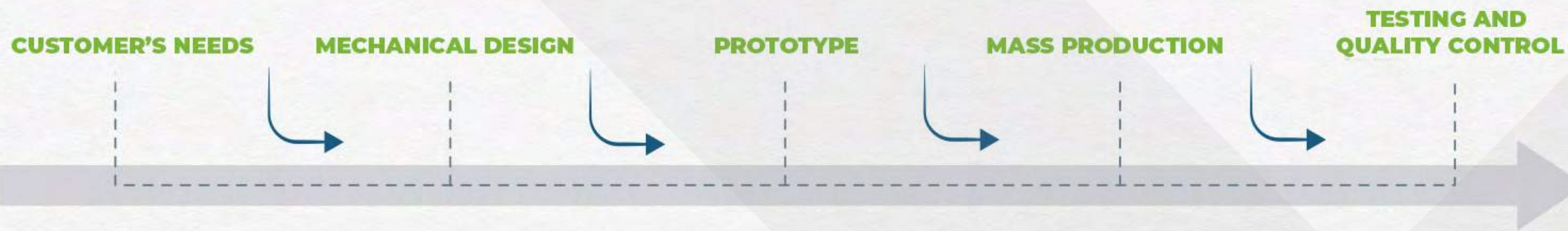
✓ Railway Industry

✓ Automotive Industry

✓ Energy Industry



BUSINESS CYCLE



AVAILABLE CAPABILITIES

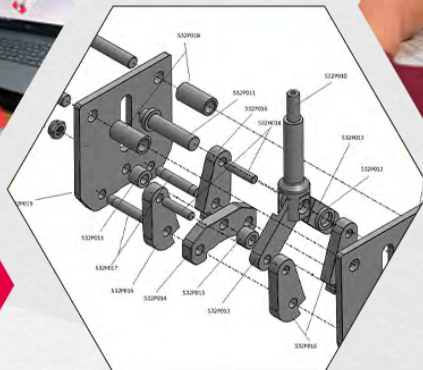
MECHANICAL
DESIGN

WELDING

QUALITY
CONTROL

MACHINING

ASSEMBLY

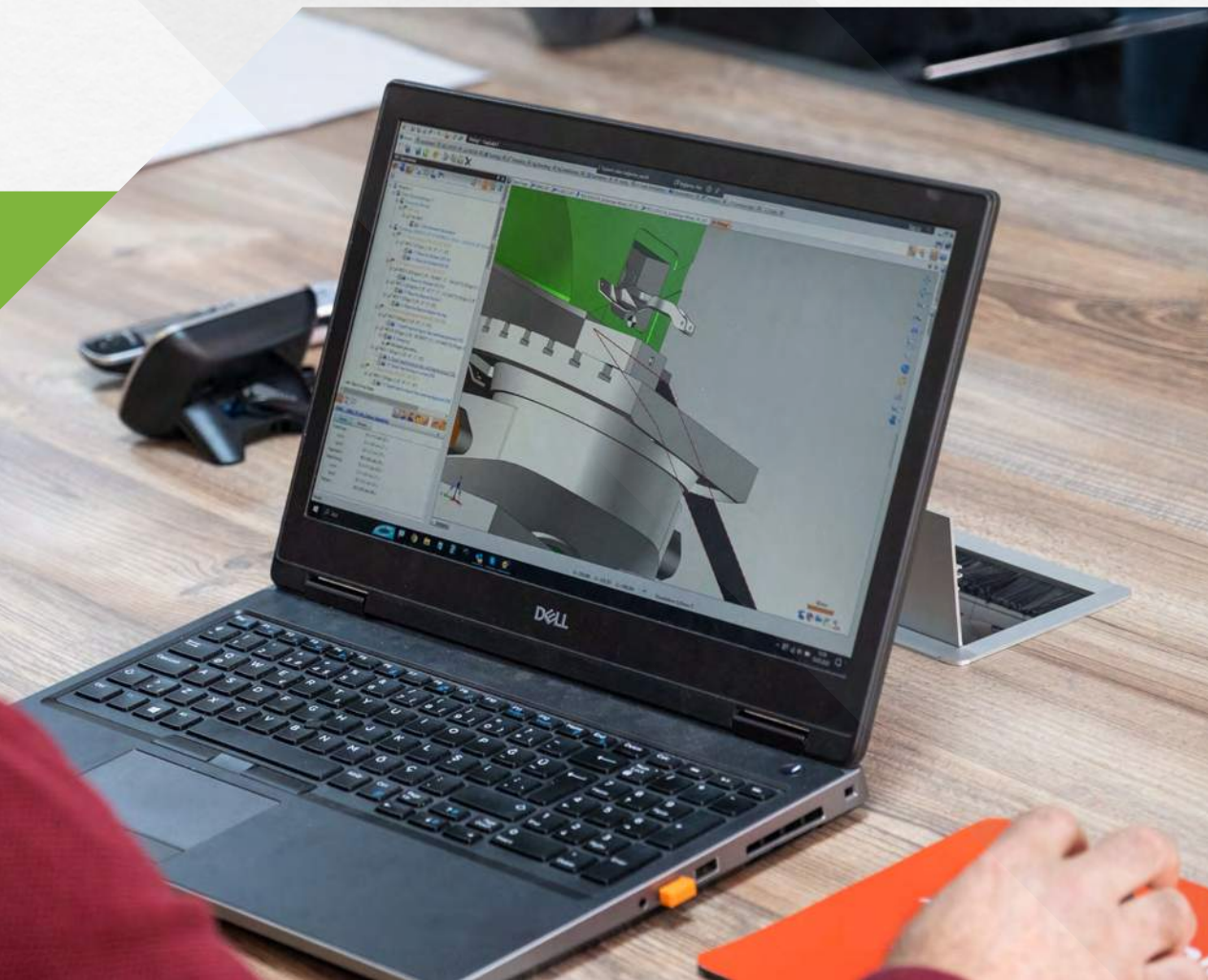


MECHANICAL DESIGN

With a wide experience on analysis and machining our expert design engineers designs in accordance with customer's needs.



As a mechanical design program is used Topsolid



MACHINE PARK



TURNING CENTER

MODEL	SIZE	QUANTITY
MAZAK/SM 300/10"	Ø400 x 700	2
MAZAK/SM 200/8"	Ø320 x 400	2
MAZAK/NEXUS 200/8"	Ø320 x 400	2
MAZAK/QUICK TURN 200/8"	Ø320 x 400	1
MAZAK/NYLX 220/8"	Ø320 x 400	2
DOOSAN/PUMA 2600/10"	Ø400 x 700	4

C-Y AXIS TURNING CENTER

MODEL	SIZE	QUANTITY
MORI SEIKI/NL 2500/10"	Ø320 x 400	2
DMG MORI SEIKI/NLX 2500/10"	Ø320 x 400	1
DMG MORI SEIKI/NLX 2500/10"	Ø320 x 400	1

4 AXIS VERTICAL MACHINING CENTER

MODEL	SIZE	QUANTITY
MAZAK/VTC 300-C	1750X700X600	2
DMG/NVX 5100	1050X530X510	1

QUALITY CONTROL



Each part is controlled at all production steps by expert quality personnel.

Quality control steps ;

- ✓ Incoming Quality Control
- ✓ First Article Inspection
- ✓ Process Quality Control
- ✓ Final Quality Control
- ✓ Quality Wall

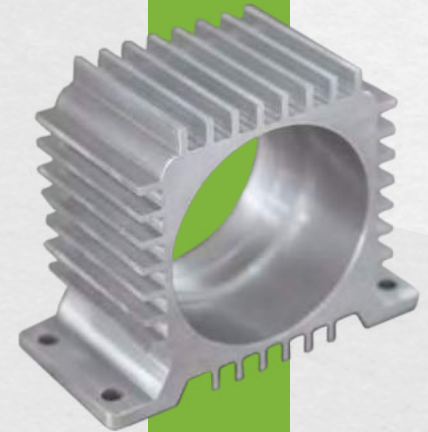
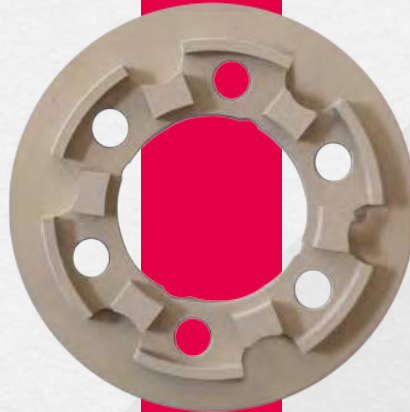
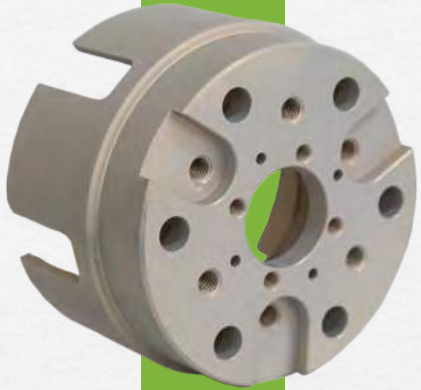


OUR PRODUCTS AUTOMOTIVE



OUR PRODUCTS

AVIATION





Kemalpaşa OSB Mah. 601 Sok. No:2
35730 Kemalpaşa / İzmir / Türkiye

Phone number: +90 (232) 462 51 01
E mail address: info@yesillermakina.com

www.yesillermakina.com